



# Highlight™ Merchandiser 1RHZC30 Specs

Low Temp Reach-Ins with 30" x 68" Doors

**Note:** All Zero Zone display cases manufactured for shipment within the U.S. meet or exceed current DOE energy requirements.

## ENERGY DATA

Refrigeration
(see note #1 for components included in baseline Btuh)
Evaporator Temperature (°F)
Baseline Btuh <sup>1,2</sup>
Discharge Air Temp. (°F) (w/ 8°F Superheat)

INDIVIDUAL CASE DATA (Includes 1 Pair of End Panels)		
1-Door Ice	1-Door F.F.	1-Door I.C.
0	-7	-16
900	1,075	1,180
4	-3	-12

Btuh Adders
Optional Glass Windowed End Panel (Each)
Fan Motors (115V) <sup>3,4</sup>
High Efficiency Electronic (SSC/ECM)
Lighting System (120V) (other LED options available)
LED Lighting (Zero Zone ChillBrite™ 5)
Anti-Sweat Door Heaters (115V) <sup>5</sup>
Standard-Energy Doors
Defrost Heater (120V)
Defrost Heater

F.F.	I.C.
Amps	Watts
315	350
Amps	Watts
0.30	20
Amps	Watts
0.15	18
Amps	Watts
0.86	99
Amps	Watts
9.10	1,047

**Notes:**

1. Baseline Evaporator Btuh based on parallel rack system, LED lighting (Zero Zone ChillBrite™ 5), standard-energy doors, and SSC electronic fan motors.
2. For condensing units (non-rack system), multiply total Btuh rating by 1.06.
3. Amps are based on electrical nameplate values, watts are based on laboratory observations of actual energy use.
4. One fan motor per door.
5. Door Options: Standard-Energy = heated glass and rails; No-Energy = no-heat glass and no-heat rails.
6. Electric Defrost: 1 per day. 19 minutes frozen food. 28 minutes ice cream. Failsafe 55 minutes. Refer to the Installation & Operation Manual for details.
7. Hot Gas Defrost: 1 per day. 12 to 22 minutes. Failsafe 30 minutes. Refer to the Installation & Operation Manual for details.

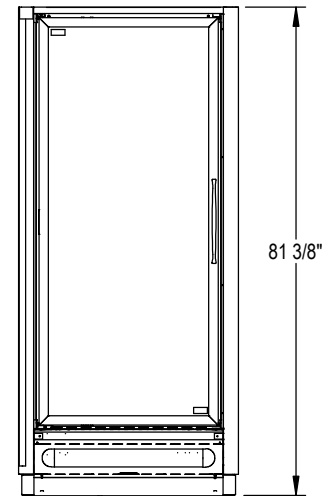
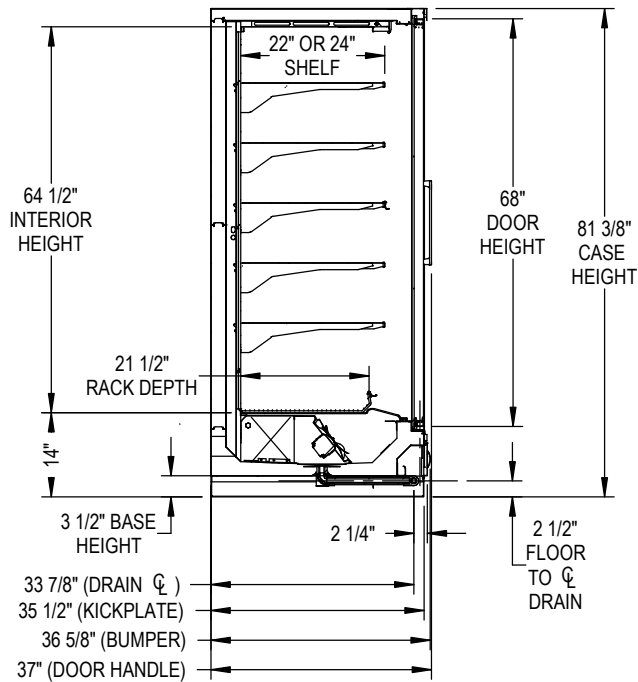
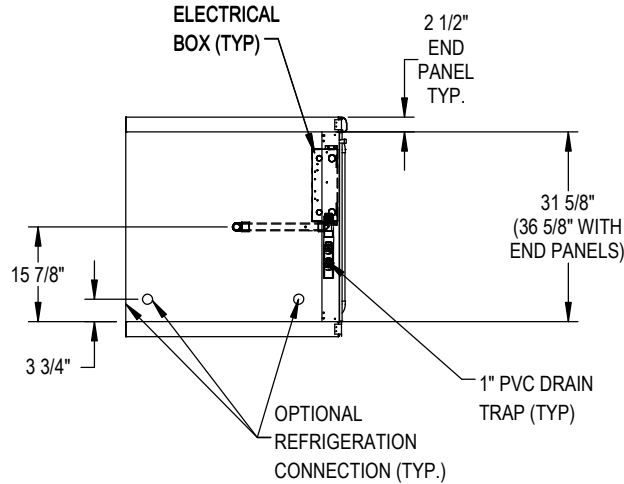
## PHYSICAL DATA

Baseline R-404A Refrigeration Piping	Outlet Size (in.)	# of Doors	Weight (lbs.)	Case Capacity		
				Facings (ft. <sup>2</sup> )	Packout (ft. <sup>3</sup> ) 22"/24" Shelves	
1-Door Suction Line O.D. (Std. Refrig. Exit)	7/8	1	530	14.1	25.8	27.9
Liquid Line O.D.	1/2	Solid End Panel	30	N/A	N/A	N/A



# Highlight™ Merchandiser 1RHZC30 Specs

Low Temp Reach-Ins with 30" x 68" Doors



SP-6117 REV. A

- Door size: 30" x 68".
- All dimensions are nominal.
- End Panels and Insulated Dividers = 2 1/2".
- Ice Merchandiser case delivers without shelves. Post supports, rear support grid, and a heavy duty bottom basket (per door) are recommended.

5/17/17

Specifications are subject to change without notice.  
Case designed to operate in an ambient temperature of 75°F and relative humidity of 55% or lower.



Zero Zone, Inc. | 110 N Oakridge Drive | North Prairie, WI 53153-9792  
Toll Free: 800-247-4496 | Fax: 262-392-6450  
www.zero-zone.com

© 2017 Zero Zone, Inc.



Intertek