



# Crystal™ Merchandiser RVMC24 Specs

Medium Temp Reach-Ins with 24" x 74" CoolView™ Doors  
 RVMC24-(B,D,P,M): (B=Beverage, D=Dairy/Deli, P=Produce, M=Meat)

**Note:** All Zero Zone display cases manufactured for shipment within the U.S. meet or exceed current DOE energy requirements.

## ENERGY DATA

| Refrigeration<br><small>(see note #1 for components included in baseline Btuh)</small> |  |
|--|--|
| Evaporator Temperature (°F)  |  |
| Baseline Btuh <sup>1,2</sup>   |  |
| Discharge Air Temp. (°F) (w/ 8°F Superheat)  |  |
| Btuh Adders  |  |
| Rail Heated Doors  |  |
| Rail & Glass Heated Doors  |  |
| Optional Glass Windowed End Panel (Each) <sup>4</sup>                                  |  |

## LINEUP DATA

| Per Door Avg. |
|---------------|
| 28            |
| 410           |
| 33            |
| Btuh          |
| 10            |
| 30            |
| 410           |

## INDIVIDUAL CASE DATA (Includes 1 Pair of End Panels)

| 2-Door (4')<br>2RVMC24 | 3-Door (6')<br>3RVMC24 | 4-Door (8')<br>4RVMC24 | 6-Door (12')<br>6RVMC24 |
|------------------------|------------------------|------------------------|-------------------------|
| 28                     | 28                     | 28                     | 28                      |
| 930                    | 1,360                  | 1,740                  | 2,560                   |
| 33                     | 33                     | 33                     | 33                      |

## Glycol Data \*

|                      |
|----------------------|
| Flow Rate (GPM)      |
| Pressure Drop (PSIG) |

| 2-Door (4') | 3-Door (6') | 4-Door (8') | 6-Door (12') |
|-------------|-------------|-------------|--------------|
| 0.6         | 0.8         | 1.2         | 1.8          |
| 3.0         | 4.2         | 5.5         | 6.1          |

\* All glycol data based on 35% Propylene Glycol by weight, 20°F Supply Temperature, and 23°-24°F Outlet Temperature.

| Fan Motors (115V) <sup>3</sup>   | Amps | Watts | Amps | Watts | Amps | Watts | Amps | Watts | Amps | Watts |
|--|------|-------|------|-------|------|-------|------|-------|------|-------|
| High Efficiency Electronic (SSC/ECM)   | 0.30 | 8     | 0.60 | 15    | 0.60 | 22    | 0.60 | 25    | 0.90 | 31    |
| Lighting System (120V) <small>(other LED options available)</small>                            | Amps | Watts | Amps | Watts | Amps | Watts | Amps | Watts | Amps | Watts |
| LED Lighting (Zero Zone ChillBrite™ 4)   | 0.15 | 18    | 0.30 | 36    |      |       | 0.60 | 72    | 0.90 | 108   |
| Left or Right-Hand Swing 2-Door. Option A, B, 3-Door, 4-Door, 6-Door (see Fig. 1 on next page) | 0.16 | 19    | 0.33 | 39    | 0.48 | 58    | 0.64 | 77    | 1.00 | 115   |
| Option C, D, E, F, 3-Door (see Fig. 1 on next page)  | 0.18 | 21    |      |       | 0.53 | 64    |      |       |      |       |
| Anti-Sweat Door Heaters (115V)   | Amps | Watts | Amps | Watts | Amps | Watts | Amps | Watts | Amps | Watts |
| No-Energy Doors (Zero Zone CoolView™)  | 0.00 | 0     | 0.00 | 0     | 0.00 | 0     | 0.00 | 0     | 0.00 | 0     |
| Rail Heated Doors (Zero Zone CoolView™)  | 0.05 | 6     | 0.09 | 10    | 0.14 | 16    | 0.19 | 22    | 0.28 | 32    |
| Rail & Glass Heated Doors (Zero Zone CoolView™)  | 0.16 | 18    | 0.31 | 36    | 0.47 | 54    | 0.63 | 72    | 0.94 | 108   |

### Notes:

1. Baseline Evaporator Btuh based on parallel rack system, LED Lighting (Zero Zone ChillBrite™ 4), no-energy doors (Zero Zone CoolView™), and SSC/ECM electronic fan motors.
2. For condensing units (non-rack system), multiply total Btuh rating by 1.08.
3. Amps are based on electrical nameplate values, watts are based on laboratory observations of actual energy use.
4. Glass windowed end panels only available with 2 1/2" end panels.

## PHYSICAL DATA

| Baseline R-404A Refrigeration Piping | Outlet Size (in.) | # of Doors      | Weight (lbs.) | Case Capacity               |   |
|--------------------------------------|-------------------|-----------------|---------------|-----------------------------|---|
|                                      |                   |                 |               | Facings (ft. <sup>2</sup> ) | Packout (ft. <sup>3</sup> ) 22"/24" Shelves |
| Suction Line O.D. (Top Refrig.)      | 1/2               | 2               | 775           | 23.7                        | 42.8  |
| Liquid Line O.D.                     | 3/8               | 3               | 933           | 35.2                        | 63.6  |
|                                      |                   | 4               | 1,020         | 46.7                        | 81.5  |
|                                      |                   | 6               | 1,254         | 69.8                        | 121.8                                       |
|                                      |                   | Solid End Panel | 30            | N/A                         | N/A   |
|                                      |                   | Glass End Panel | 55            | N/A                         | N/A   |

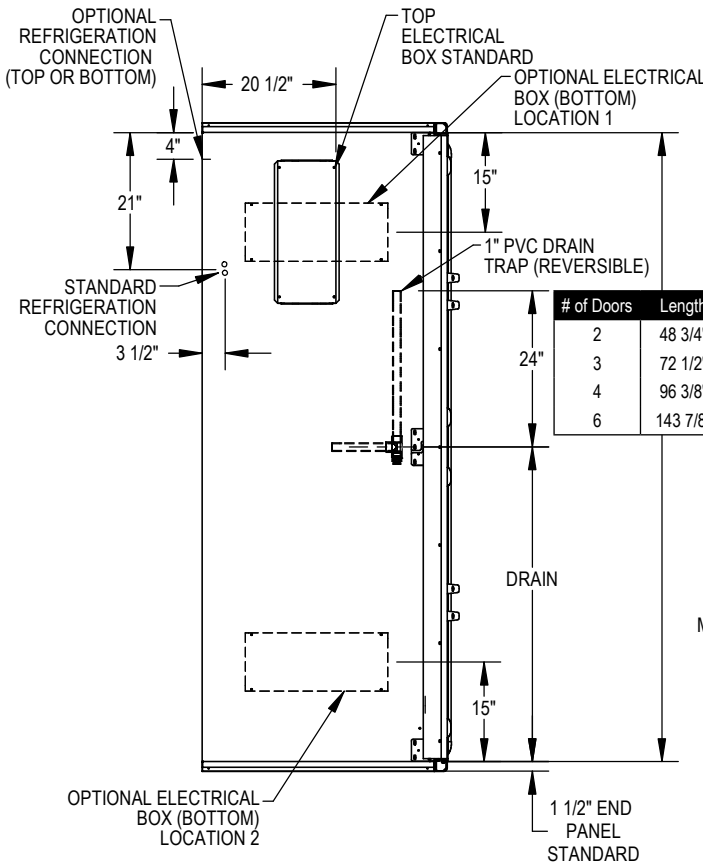
## MULTI-DECK CASE LENGTH CROSS-REFERENCE

| Conventional Multi-Deck Lineup Lengths | # of Doors | Total Length w/ Ends |
|--|------------|----------------------|
| 8' 3"                                  | 4          | 8' 3 1/4"            |
| 12' 3"                                 | 6          | 12' 3"               |
| 16' 3"                                 | 8          | 16' 3 1/2"           |
| 20' 3"                                 | 10         | 20' 3 1/4"           |
| 24' 3"                                 | 12         | 24' 3"               |

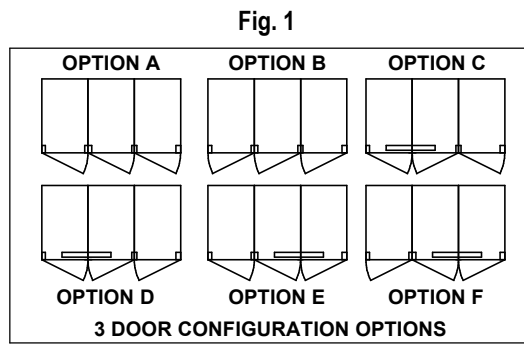
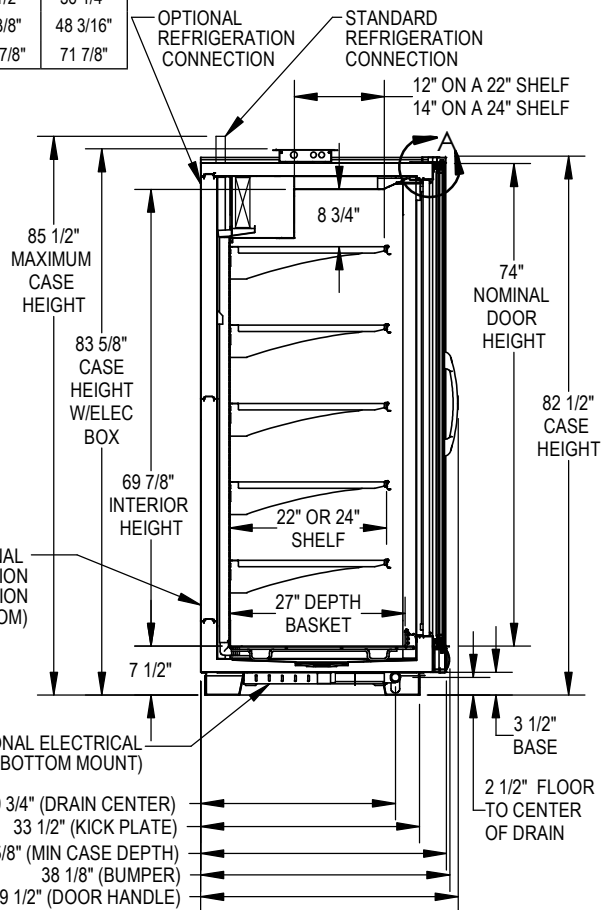
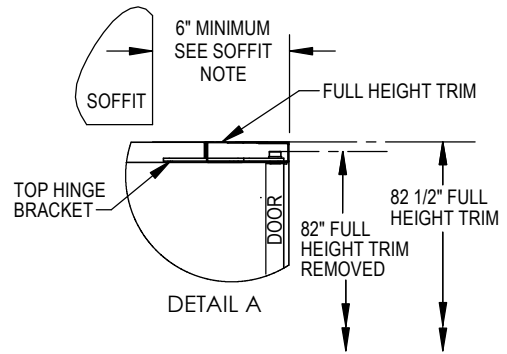


# Crystal™ Merchandiser RVMC24 Specs

Medium Temp Reach-Ins with 24" x 74" CoolView™ Doors  
 RVMC24-(B,D,P,M): (B=Beverage, D=Dairy/Deli, P=Produce, M=Meat)



| # of Doors | Length   | Drain Dim. |
|------------|----------|------------|
| 2          | 48 3/4"  | 24 3/8"    |
| 3          | 72 1/2"  | 36 1/4"    |
| 4          | 96 3/8"  | 48 3/16"   |
| 6          | 143 7/8" | 71 7/8"    |



SP-5065 REV E

- Door size: 24" x 74".
- All dimensions are nominal.
- Peg, gravity-feed, and other merchandising options available.
- 2 1/2" End Panels are available.
- Building soffits must be set back 6" from the front of the doors to allow for access to door hinges on the top of the case.

Specifications are subject to change without notice.  
 Case designed to operate in an ambient temperature of 75°F and relative humidity of 55% or lower.

6/2/17



Zero Zone, Inc. | 110 N Oakridge Drive | North Prairie, WI 53153-9792  
 Toll Free: 800-247-4496 | Fax: 262-392-6450  
 www.zero-zone.com



© 2017 Zero Zone, Inc.

Intertek