



Highlight™ Merchandiser 1RHCC30 & 1RHZC30 Hybrid™ Specs

Medium and Low Temp Hybrid™ Reach-Ins with 30" x 68" Doors

Note: All Zero Zone display cases manufactured for shipment within the U.S. meet or exceed current DOE energy requirements.

PHYSICAL DATA	Medium Temp 1RHCC30	Low Temp 1RHZC30
Facings (ft. ²)	14.1	14.1
Packout (ft. ³)	27.9	27.9
Shelf Depth (in.)	24	24
Weight (lbs.)*	532	532

* Does not include weight of condensing unit. Weights include 2 end panels at 54 lbs. per pair.

ELECTRICAL DATA ^{1,2}	ChillBrite™ 5 LED Lighting, Standard / No-Energy Doors, SSC Fan Motors w/ Cond Evap System ⁴	
MOCP (amps) ³	20	25
MCA (amps)	13.5	18.8

ENERGY DATA	ChillBrite™ 5 LED Lighting, Standard / No-Energy Doors, SSC Fan Motors w/ Cond Evap System ⁴	
Daily Energy Use (kWh)	4.2	13.4
Rejected Heat (Btuh) ⁴	591	1,909

R-404A CHARGE	ChillBrite™ 5 LED Lighting, Standard / No-Energy Doors, SSC Fan Motors w/ Cond Evap System ⁴	
R-404A Charge (lbs.) ⁵	3.5	3.5

REFRIGERATION	ChillBrite™ 5 LED Lighting, Standard / No-Energy Doors, SSC Fan Motors w/ Cond Evap System ⁴	
Zero Zone Condensing Unit #	69-9633	69-9629
Crated Weight (lbs.)	118	118

ELECTRICAL DATA ^{1,2}	ChillBrite™ 5 LED Lighting, Standard / No-Energy Doors, SSC Fan Motors w/o Cond Evap System ⁴	
MOCP (amps) ³	15	25
MCA (amps)	11.5	16.7

ENERGY DATA	ChillBrite™ 5 LED Lighting, Standard / No-Energy Doors, SSC Fan Motors w/o Cond Evap System ⁴	
Daily Energy Use (kWh)	4.1	13.2
Rejected Heat (Btuh) ⁴	577	1,881

R-404A CHARGE	ChillBrite™ 5 LED Lighting, Standard / No-Energy Doors, SSC Fan Motors w/o Cond Evap System ⁴	
R-404A Charge (lbs.) ⁵	3.5	3.5

REFRIGERATION	ChillBrite™ 5 LED Lighting, Standard / No-Energy Doors, SSC Fan Motors w/o Cond Evap System ⁴	
Zero Zone Condensing Unit #	69-9633	69-9629
Crated Weight (lbs.)	118	118

Notes:

- 115V 3-wire service; 115V-1PH-60HZ; black power, white neutral, green ground. Buck/boost transformer available for low voltage conditions.
- Main service disconnect is not provided.
- MOCP = Maximum over-current protection.
- Adequate ventilation must be provided to dissipate rejected heat from the top of the unit for proper performance. Clearance of less than 30" above the top of the shroud to the ceiling requires special design considerations. See Zero Zone Hybrid™ Installation and Operation Manual for specific details.
- Refrigerant charge includes combined condensing unit and case charges.
- See separate reach-in case spec sheets for additional details: RHCC30 & RHZC30.

Factory-Installed Hybrid™ Features:

- Refrigeration piping with quick-connect couplings and refrigerant charge.
- Pre-wired and labeled for easy connection.
- Electronic control includes: time clock, temperature and defrost control, visual and audible temperature alarm, and network communication capability.

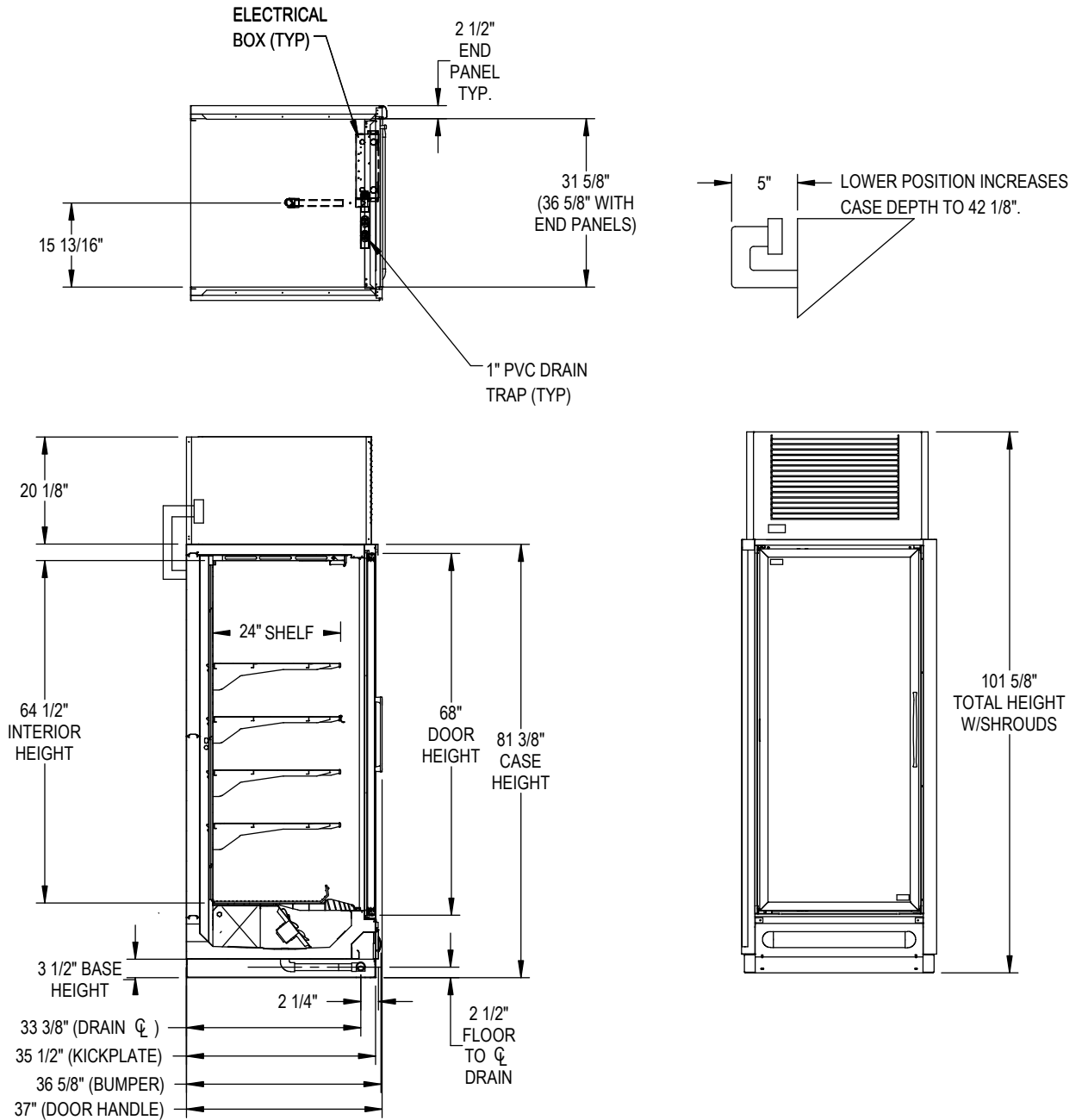
Field-Installed Hybrid™ Features:

- 20 1/4" tall aluminum shroud (front and sides standard, rear optional). Consult factory for other options.
- Condensing unit with quick-connect threaded couplings.
- Condensate collection and removal system: collection pan, pump, float switch, condensate dissipation pan with heater element, and connecting tubing.



Highlight™ Merchandiser 1RHCC30 & 1RHZC30 Hybrid™ Specs

Medium and Low Temp Hybrid™ Reach-Ins with 30" x 68" Doors



- Door size: 30" x 68".
- All dimensions are nominal.
- Peg, gravity-feed, and other merchandising options available.
- 2 1/2" End Panels are available.
- Optional base configurations are available to fit case through doorways as low as 80". Consult the factory for details.

6/20/17

Specifications are subject to change without notice.
Case designed to operate in an ambient temperature of 75°F and relative humidity of 55% or lower.



Zero Zone, Inc. | 110 N Oakridge Drive | North Prairie, WI 53153-9792
Toll Free: 800-247-4496 | Fax: 262-392-6450
www.zero-zone.com

© 2017 Zero Zone, Inc.

