



# Highlight Merchandiser® RHLC30IM Ice Merchandiser Specs

Low Temp Ice Merchandiser Reach-Ins with 30" x 68" CoolView® Envision® Doors

RHLC30IM: IM=Ice Merchandiser

## Refrigeration Data

Refrigeration	Individual Case Data (Includes 1 Pair of End Panels)		
	1-Door	2-Door	3-Door
Evaporator Temperature (°F) <sup>1</sup>	0	0	0
Baseline Btu/h <sup>2,3</sup>	990	1,900	2,670
Discharge Air Temperature (°F) (w/ 8°F Superheat)	4	4	4
<b>Btu/h Deducts</b>	<b>Per Door Avg</b>		
Solid Doors	-65		
<b>Btu/h Adders</b>	<b>Per Door Avg</b>		
Anti-Sweat High Humidity Package	100		

## Electrical & Energy Data <sup>4</sup>

Electrical & Energy Data	Individual Case Data (Includes 1 Pair of End Panels)					
	1-Door		2-Door		3-Door	
<b>Fan Motors (115V) <sup>5</sup></b>	<b>Amps</b>	<b>Watts</b>	<b>Amps</b>	<b>Watts</b>	<b>Amps</b>	<b>Watts</b>
High Efficiency Electronic (ECM or SSC)	0.30	20	0.60	38	0.90	59
<b>Lighting System (120V)</b>	<b>Amps</b>	<b>Watts</b>	<b>Amps</b>	<b>Watts</b>	<b>Amps</b>	<b>Watts</b>
LED Lighting (Zero Zone ChillBrite 4190)	0.15	18	0.29	35	0.44	53
<b>Anti-Sweat Heat (115V) <sup>6</sup></b>	<b>Amps</b>	<b>Watts</b>	<b>Amps</b>	<b>Watts</b>	<b>Amps</b>	<b>Watts</b>
Standard-Energy Doors (Zero Zone CoolView Envision)	0.72	83	1.43	164	2.13	245
High Humidity Package (Zero Zone CoolView Envision) <sup>7</sup>	1.06	122	2.15	247	3.20	368
Solid Doors (Zero Zone CoolView Envision)	0.50	58	1.01	116	1.50	173
<b>Defrost Heaters <sup>8,9</sup></b>	<b>Amps</b>	<b>Watts</b>	<b>Amps</b>	<b>Watts</b>	<b>Amps</b>	<b>Watts</b>
Single Phase (120V/1/60Hz or 208V/1/60Hz) <sup>10</sup>	9.10	1,047	8.00	1,680	12.00	2,496
Three Phase (208V/3/60Hz)	N/A	N/A	4.66	1,680	6.93	2,496

## Physical Data

Refrigeration Piping <sup>11</sup>	Outlet Size (in.)		
	1-Door	2-Door	3-Door
Suction Line O.D. (Top Refrigeration Exit)	1/2	1/2	5/8
Liquid Line O.D. (Electric Defrost)	1/4	3/8	3/8

Case Calculations	Solid End Panel	1-Door	2-Door	3-Door
Facings (ft. <sup>2</sup> )	N/A	13.6	27.3	40.9
Packout (ft. <sup>3</sup> ) 24" Shelves	N/A	27.3	54.5	81.9
Packout Limit (lbs.) 24" Shelves	N/A	820	1,640	2,460
Weight (lbs.)	30	532	783	1,033

### Notes:

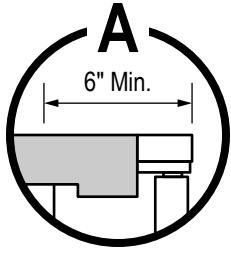
- For high-glide refrigerants, use dew point for unit sizing. Adjust evaporator pressure as needed to maintain discharge air temperatures.
- Baseline Evaporator Btu/h based on parallel rack system, LED lighting (Zero Zone ChillBrite®), standard-energy doors (Zero Zone CoolView® Envision®), and ECM or SSC electronic fan motors.
- For condensing units (non-rack system), multiply total Btu/h rating by 1.06.
- Amps are based on electrical nameplate values. Watts are based on laboratory observations of actual energy use.
- One fan motor per door.
- Door (Anti-Sweat) Options: standard-energy and high humidity package = heated glass and heated rails; solid doors = heated rails. All options include mullion and sill heat.
- Anti-Sweat Controller required for the high humidity package to comply with DOE energy requirements.
- Electric Defrost: 1 per day. Defrost termination temperature setting is 50°F. Failsafe time is 55 minutes. Refer to the Installation & Operation Manual for details.
- Hot Gas Defrost: 1 per day. Defrost termination temperature setting is 65°F. Failsafe time is 30 minutes. Refer to the Installation & Operation Manual for details.
- 1-door defrost uses 120V/1/60Hz. 2 and 3-door defrost uses 208V/1/60Hz.
- Individual risers for circuits of more than one case require refrigeration line sizing by Zero Zone.



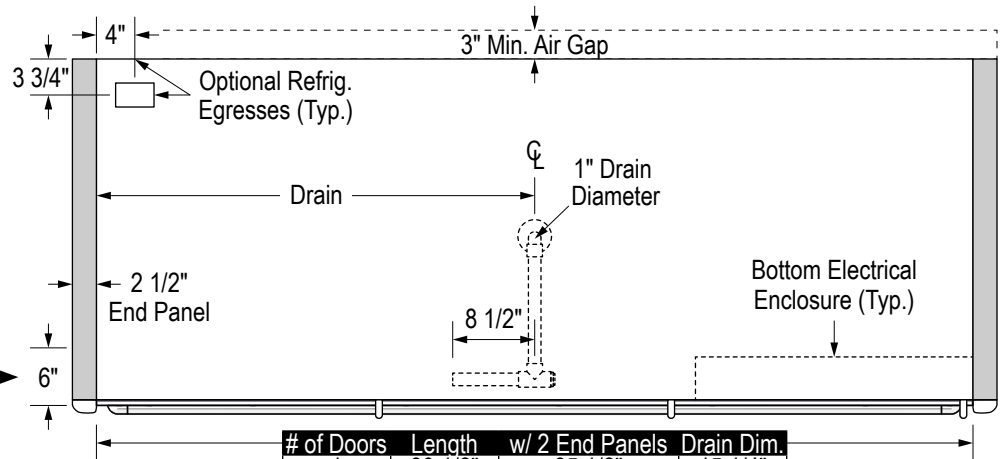
# Highlight Merchandiser® RHLC30IM Ice Merchandiser Specs

Low Temp Ice Merchandiser Reach-Ins with 30" x 68" CoolView® Envision® Doors

RHLC30IM: IM=Ice Merchandiser

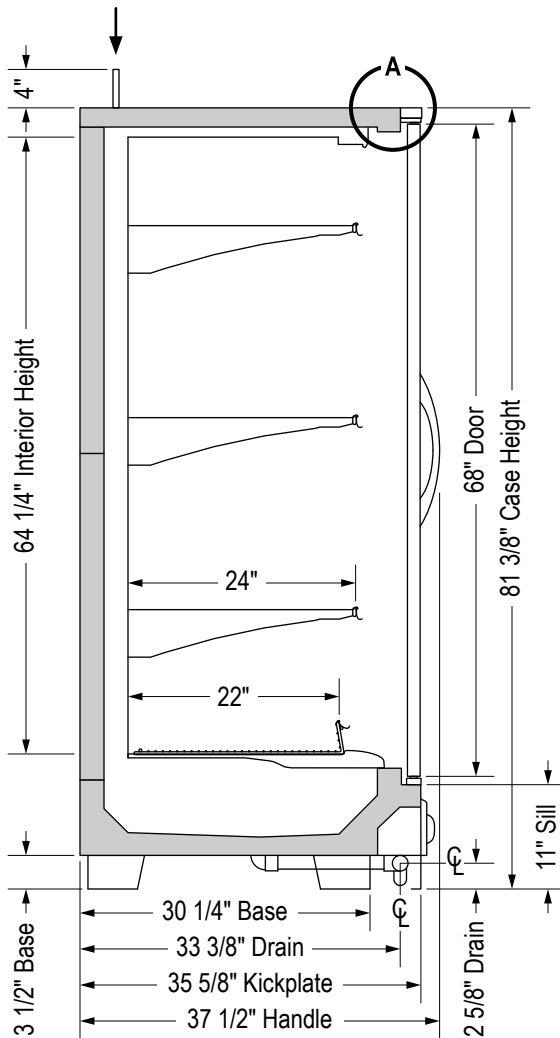


Building soffits must be set back at least 6" from the front of the doors to allow access to electrical wiring on the top of the case.

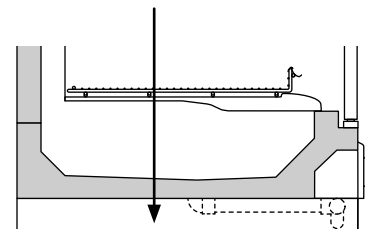


# of Doors	Length	w/ 2 End Panels	Drain Dim.
1	30 1/2"	35 1/2"	15 1/4"
2	60 7/8"	65 7/8"	30 1/2"
3	91 3/8"	96 3/8"	45 5/8"

Optional top refrigeration connection increases case height by up to 4".



- Coil cover support posts, protective rear wall grid, and heavy duty bottom wire rack per door are included.
- 1-Door bases run front to back.



SS-122-A

Specifications are subject to change without notice. All dimensions are nominal.  
Case designed to operate in an ambient temperature of 75°F and relative humidity of 55% or lower.

9/10/2021



Zero Zone, Inc.  
800-247-4496 • www.zero-zone.com  
© 2021 Zero Zone, Inc.

