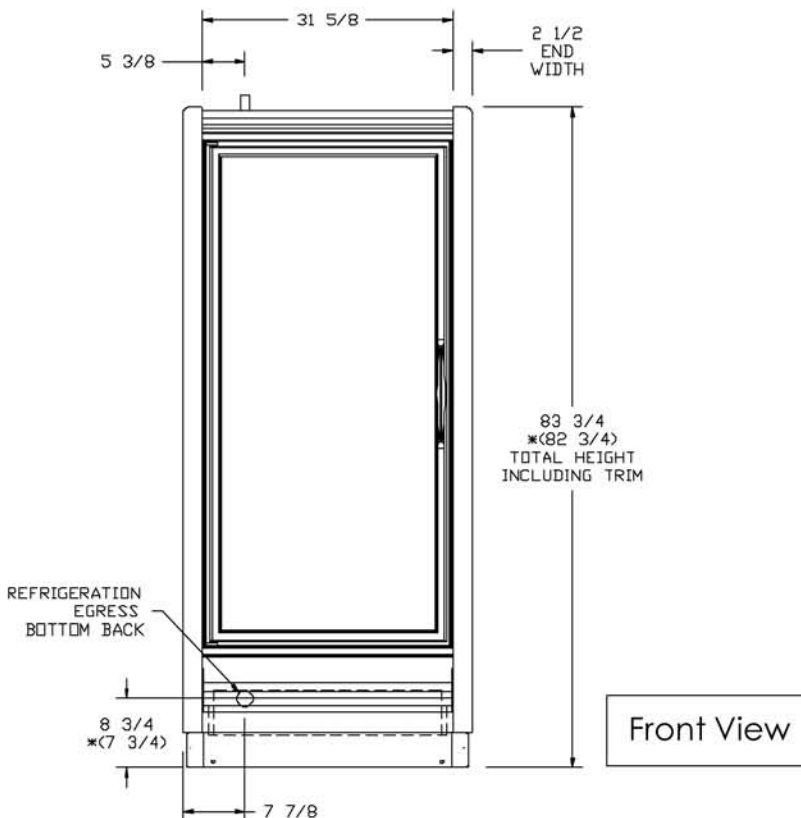
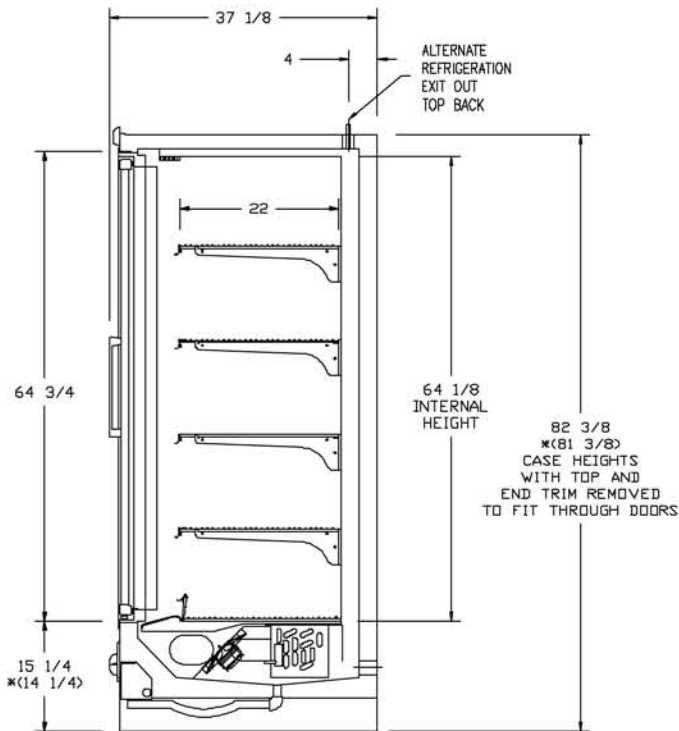
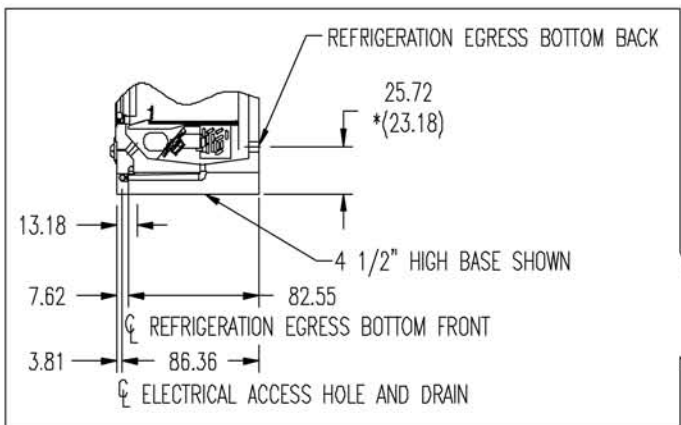




1RMZC30 SPECIFICATION SHEET



* NOTE: CASE DIMENSIONS SHOWN REFLECT STANDARD 4-1/2" HIGH BASES
DIMENSIONS SHOWN IN (PARENTHESIS) REFLECT 3-1/2" BASES.



*USES 3 1/2" BASE

Zero Zone, Inc. • 110 N. Oakridge Dr.
North Prairie, WI 53153-9792
1-800-247-4496 • FAX: 1-262-392-6450
www.zero-zone.com

All specifications are subject to change without notice.



1RMZC30 SPECIFICATION SHEET

REFRIGERANT CONNECTIONS SIZES FOR ELECTRIC DEFROST

MODEL NUMBER	SUCTION LINE O.D.	LIQUID LINE O.D.	SUCTION LINE O.D. FOR REFRIGERATION OUT TOP BACK
1RMZC30	1/2	3/8	1/2

REFRIGERANT CONNECTIONS SIZES FOR HOT GAS DEFROST

MODEL NUMBER	SUCTION LINE O.D.	LIQUID LINE O.D.	SUCTION LINE O.D. FOR REFRIGERATION OUT TOP BACK
1RMZC30	1/2	1/2	1/2

ELECTRICAL SPECS. BY DOOR MANUFACTURER

MODEL NUMBER	FANS AMPS	T-8 LIGHTS AMPS	T-10 LIGHT AMPS ONE END*	T-10 LIGHT AMPS BOTH ENDS	ANTI-SWEAT HEATERS	DEFROST HEATER AMPS 115V/1/60HZ.
ANTHONY DOORS						
1RMZC30	0.34	0.97	0.75	1.5	2.00	9.1

SUBTRACT 0.19 AMPS FOR PSC FAN MOTORS
*STANDARD FOR CASE IN A LINE-UP

CAPACITY & WEIGHT SPECIFICATIONS

MODEL NUMBER	CAPACITIES	
	USABLE CUBIC FEET	VERTICAL SURFACE SQUARE FOOTAGE
1RMZC30	26	14
	WEIGHT IN POUNDS*	
	578 (ESTIMATE)	

*WEIGHT BASED ON UNCRATED CASES WITHOUT ENDS, AND FULLY SHELVED.
SINGLE END WEIGHT: 54 POUNDS

BTU/HR ENERGY REQUIREMENTS: FROZEN FOOD -11°F EVAPORATOR (-5°F AVERAGE PRODUCT TEMPERATURE) ICE CREAM -18°F EVAPORATOR (-12°F AVERAGE PRODUCT TEMPERATURE)

MODEL NUMBER	BTU/HR @ -11°F	BTU/HR @ -18°F	BTU/HR RATING BASED ON T-8 LIGHTING AND PARALLEL RACK SYSTEM. MULTIPLY BY 1.04 FOR CONVENTIONAL SYSTEM.
1RMZC30	1,625	1,750	ADD 30 BTU/HR FOR T-10 LIGHTING
			CASE DESIGNED TO OPERATE IN AN AMBIENT OF 75°F OR LOWER AND RELATIVE HUMIDITY OF 55% OR LOWER. DEDUCT 57 BTU/HR/ FOR PSC FAN MOTORS

Zero Zone, Inc. • 110 N. Oakridge Dr.
North Prairie, WI 53153-9792
1-800-247-4496 • FAX: 1-262-392-6450
www.zero-zone.com



All specifications are subject to change without notice.

1RMZC30
08/13/07