



Note: Effective 1/1/12, all Zero Zone display cases manufactured for shipment within the U.S. meet or exceed current DOE energy requirements.

ENERGY DATA

Refrigeration <small>(see note #1 for components included in baseline Btuh)</small>	
Evaporator Temperature (°F)	-10
Baseline Btuh ^{1,2}	710
Discharge Air Temp. (°F) (w/ 8°F Superheat)	-3
Btuh Deducts	
No-Energy Doors	90

LINEUP DATA	
Per Door Avg.	
F.F.	I.C.
-10	-17
710	770
-3	-12
Btuh	
90	90

INDIVIDUAL CASE DATA (Includes 1 Pair of End Panels)					
2-Door		3-Door			
F.F.	I.C.	F.F.	I.C.		
-10	-17	-10	-17		
1,620	1,750	2,330	2,510		
-3	-12	-3	-12		

Fan Motors (115V) ^{5,6}	
High Efficiency Electronic (SSC/ECM)	0.30
Lighting System (120V) <small>(other LED options available)</small>	
LED Lighting (Anthony OptiMax Pro24) Low Power	0.15
Anti-Sweat Door Heaters (115V) ^{2,3,5}	
Anthony ELM (Low-Energy Doors)	0.84
Anthony ELM II (No-Energy Doors)	0.66
Defrost Heaters (208V)	
Defrost Heater ⁷	2.63

Amps	Watts
0.30	12
Amps	Watts
0.15	18
Amps	Watts
0.84	97
0.66	76
Amps	Watts
2.63	600

Amps	Watts	Amps	Watts
0.60	24	0.90	36
Amps	Watts	Amps	Watts
0.30	36	0.45	54
Amps	Watts	Amps	Watts
1.85	212	2.52	290
1.49	172	1.98	228
Amps	Watts	Amps	Watts
5.30	1,160	7.90	1,740

Notes:

1. Baseline Evaporator Btuh based on parallel rack system, LED lighting (Optimax Pro24 Low Power), ELM low-energy doors with low energy frames (LEF), and SSC electronic fan motors.
2. Door Options: Standard-Energy; Low-Energy = no-heat glass and heated rails; No-Energy = no-heat glass and no-heat rails. All options have frame heat.
3. All door options come with LEF (Low Energy Frames).
4. For condensing units (non-rack system), multiply total Btuh rating by 1.06.
5. Amps are based on electrical nameplate values, watts are based on laboratory observations of actual energy use.
6. One fan motor per door.
7. Electric Defrost: 1 per day. 36 minutes frozen food. 43 minutes ice cream. Failsafe 54 minutes. Refer to the Installation & Operation Manual for details.

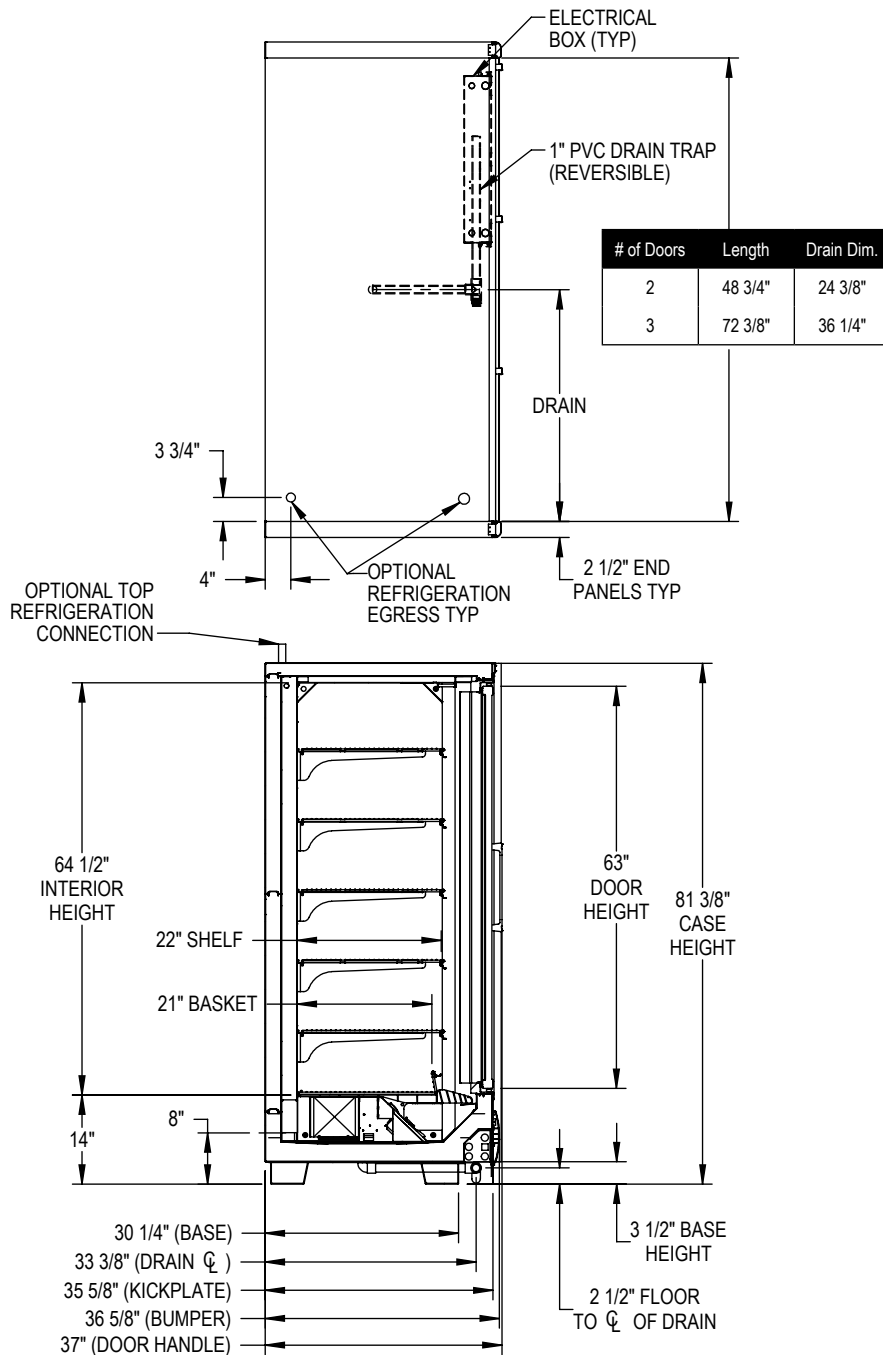
PHYSICAL DATA

Baseline R-404a Refrigeration Piping	Outlet Size (in.)	# of Doors	Weight (lbs.)	Case Capacity
				Facings (ft. ²) Packout (ft. ³) 22" Shelves
Suction Line O.D. (Std. Refrig. Exit)	7/8	2	567	21.8 39.9
2 to 3 Door Suction Line O.D. (Top Refrig.)	5/8	3	820	32.5 59.1
Liquid Line O.D. (Electric Defrost)	3/8	Solid End Panel	30	N/A N/A



RMZC24 Specs

Low Temp Reach-Ins with 24" x 63" Doors



- Door size: 24" x 63".
- All dimensions are nominal.
- Top refrigeration connections increase case height by up to 4".
- End Panels and Insulated Dividers = 2 1/2".

Specifications are subject to change without notice.

Case designed to operate in an ambient temperature of 75°F and relative humidity of 55% or lower.

5/4/16



Zero Zone, Inc. | 110 N Oakridge Drive | North Prairie, WI 53153-9792
 Toll Free: 800-247-4496 | Fax: 262-392-6450
 www.zero-zone.com

© 2016 Zero Zone, Inc.



Intertek