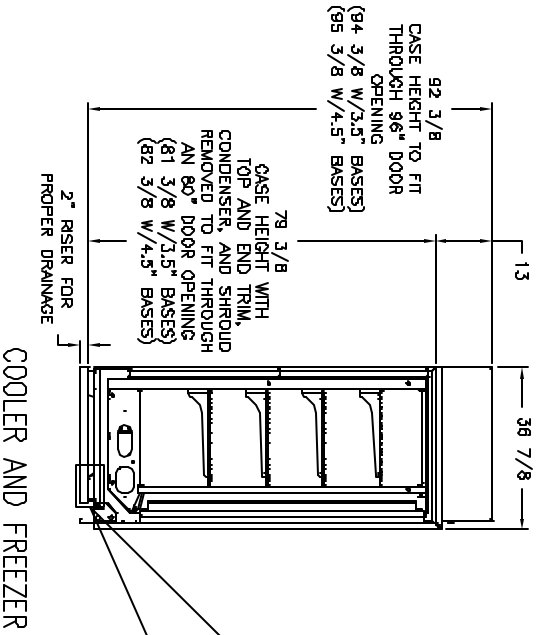


ELECTRICAL			CONTROL							
MODEL	INCOMING SUPPLY	MIN CIRCUIT AMPS	AMPS RLA	DEFROST CUT-OUT	CUT-OFF	DIFF.	H.P.	REF.	CHARGE (LBS.)	
COOLERS										
2RMC-SC	W/O EVAP HEATER	115V-1PH-60HZ	15	13.01	OFF CYCLE	34° F	4° F	1/2	R22	5 LBS.
2RMC-SC	WITH EVAP HEATER	115V-1PH-60HZ	20	21.34	OFF CYCLE	34° F	4° F	1/2	R22	5 LBS.
3RMC-SC	W/O EVAP HEATER	115-208/230V-1PH-60HZ	20	13.01	OFF CYCLE	34° F	4° F	1/2	R22	5 LBS.
3RMC-SC	WITH EVAP HEATER	115-208/230V-1PH-60HZ	15	14.30	OFF CYCLE	34° F	4° F	3/4	R22	6 LBS.
3RMC-SC	W/O EVAP HEATER	115-208/230V-1PH-60HZ	20	17.88	OFF CYCLE	34° F	4° F	3/4	R22	6 LBS.
3RMC-SC	WITH EVAP HEATER	115V-1PH-60HZ	30	23.34	OFF CYCLE	34° F	4° F	3/4	R22	6 LBS.
3RMC-SC	W/O EVAP HEATER	115V-1PH-60HZ	35	31.87	OFF CYCLE	34° F	4° F	3/4	R22	6 LBS.
FREEZERS										
2RZC-SC	WITH EVAP HEATER	115-208/230V-1PH-60HZ	20	17.18	47° F	-10° F	3° F	1	R404A	5 LBS.
3RZC-SC	WITH EVAP HEATER	115-208/230V-1PH-60HZ	25	21.30	47° F	-10° F	3° F	1 1/2	R404A	8 LBS.

CUT-N = CUT-OUT + DIFF.

INSTALLER NOTE:
 SECURE PUMP DISCHARGE TUBE TO CONDENSATE EVAPORATOR OVERFLOW TUBE WITH THE WRAP.
 CONNECT INCOMING SUPPLY TO THE CONDENSER ELECTRICAL BOX.



DIGITAL DISPLAY VIEWED FROM OUTSIDE THE SHROUD. IT IS NOT ATTACHED TO THE SHROUD IN CASE ACCESS TO CONDENSING UNIT IS NEEDED.

