



Crystal Merchandiser® RVMC24UN Ultra Narrow Specs

Medium Temp Ultra Narrow Reach-Ins with 24" x 74" CoolView® Ultra™ Doors
 RVMC24UN-(B,D,P,M): UN=Ultra Narrow (B=Beverage, D=Dairy/Deli, P=Produce, M=Meat)

Refrigeration Data

Refrigeration	
Evaporator Temperature (°F) ¹	
Baseline Btu/h ^{2,3}	
Discharge Air Temperature (°F) (w/ 8°F Superheat)	
Btu/h Adders	
Rail Heated Doors (Zero Zone CoolView Ultra)	
Rail & Glass Heated Doors (Zero Zone CoolView Ultra)	

Individual Case Data (Includes 1 Pair of End Panels)	
2-Door	
	28
	930
	33
2-Door	
	20
	60

Electrical & Energy Data ⁴

Fan Motors (115V) ⁵	
High Efficiency Electronic (ECM or SSC)	
Lighting System (120V)	
LED Lighting (Zero Zone ChillBrite 4234)	
Anti-Sweat Heat (115V) ⁶	
No-Energy Doors (Zero Zone CoolView Ultra)	
Rail Heated Doors (Zero Zone CoolView Ultra)	
Rail & Glass Heated Doors (Zero Zone CoolView Ultra)	

Individual Case Data (Includes 1 Pair of End Panels)		
2-Door		
	Amps	Watts
	0.84	15
	Amps	Watts
	0.30	36
	Amps	Watts
	0.00	0
	0.09	10
	0.31	36

Physical Data

Refrigeration Piping: R-404A & R-448A ⁸	
Suction Line O.D. (Top Refrigeration Exit)	
Liquid Line O.D.	
Refrigeration Piping: CO2 ⁸	
Suction Line O.D. (Top Refrigeration Exit)	
Liquid Line O.D.	

Outlet Size (in.)	
2-Door	
	1/2
	3/8
2-Door	
	3/8
	3/8

Case Calculations	Solid End Panel
Facings (ft. ²)	N/A
Packout (ft. ³) 15" Shelves	N/A
Weight (lbs.)	30

2-Door	
	23.6
	26.7
	580

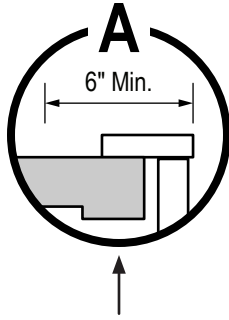
Notes:

- For high-glide refrigerants, use dew point for unit sizing. Adjust evaporator pressure as needed to maintain discharge air temperatures.
- Baseline Evaporator Btu/h based on parallel rack system, LED lighting (Zero Zone ChillBrite® 4234), no-energy doors (Zero Zone CoolView® Ultra™), and ECM or SSC electronic fan motors.
- For condensing units (non-rack system), multiply total Btu/h rating by 1.08.
- Amps are based on electrical nameplate values. Watts are based on laboratory observations of actual energy use.
- 2-door cases use two fan motors.
- Door (Anti-Sweat) Options: no-energy = no-heat glass and no-heat rails. Rail heat and glass heat available.
- Individual risers for circuits of more than one case require refrigeration line sizing by Zero Zone.

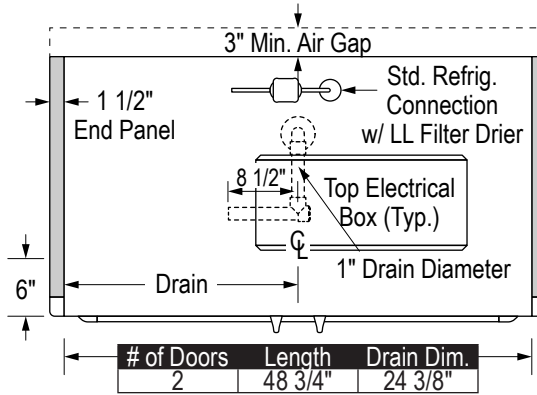


Crystal Merchandiser® RVMC24UN Ultra Narrow Specs

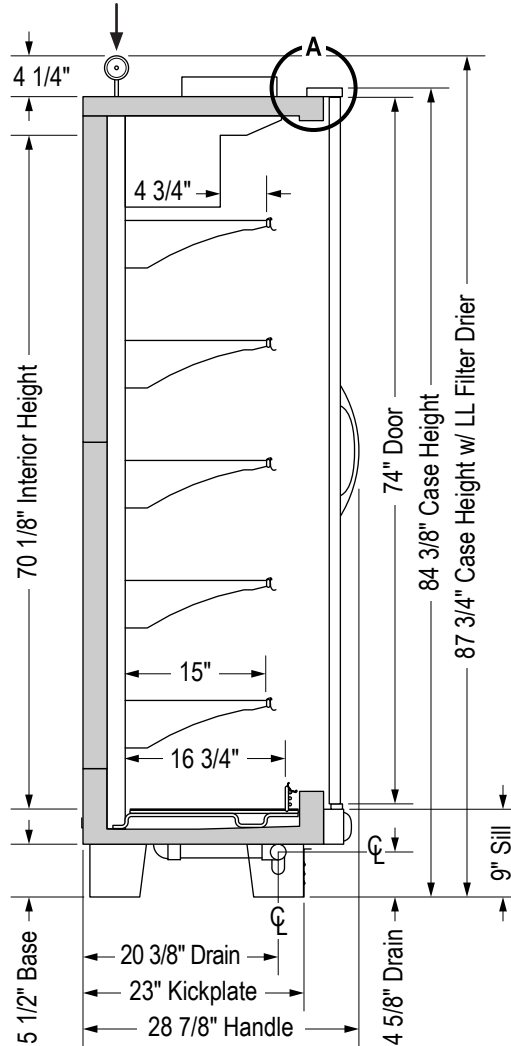
Medium Temp Ultra Narrow Reach-Ins with 24" x 74" CoolView® Ultra™ Doors
 RVMC24UN-(B,D,P,M): UN=Ultra Narrow (B=Beverage, D=Dairy/Deli, P=Produce, M=Meat)



Building soffits must be set back at least 6" from the front of the doors to allow access to electrical wiring on the top of the case.



Top refrigeration connection with LL Filter Drier increases case height by up to 4 1/4".



IMPORTANT: The Ultra Narrow must be anchored to either another case or a wall to ensure the case will not tip forward. See Installation & Operation Manual for more information.

SS-78-F

Specifications are subject to change without notice. All dimensions are nominal.
 Case designed to operate in an ambient temperature of 75°F and relative humidity of 55% or lower.

2/23/2024



Zero Zone, Inc.
 800-247-4496 • www.zero-zone.com
 © 2024 Zero Zone, Inc.

